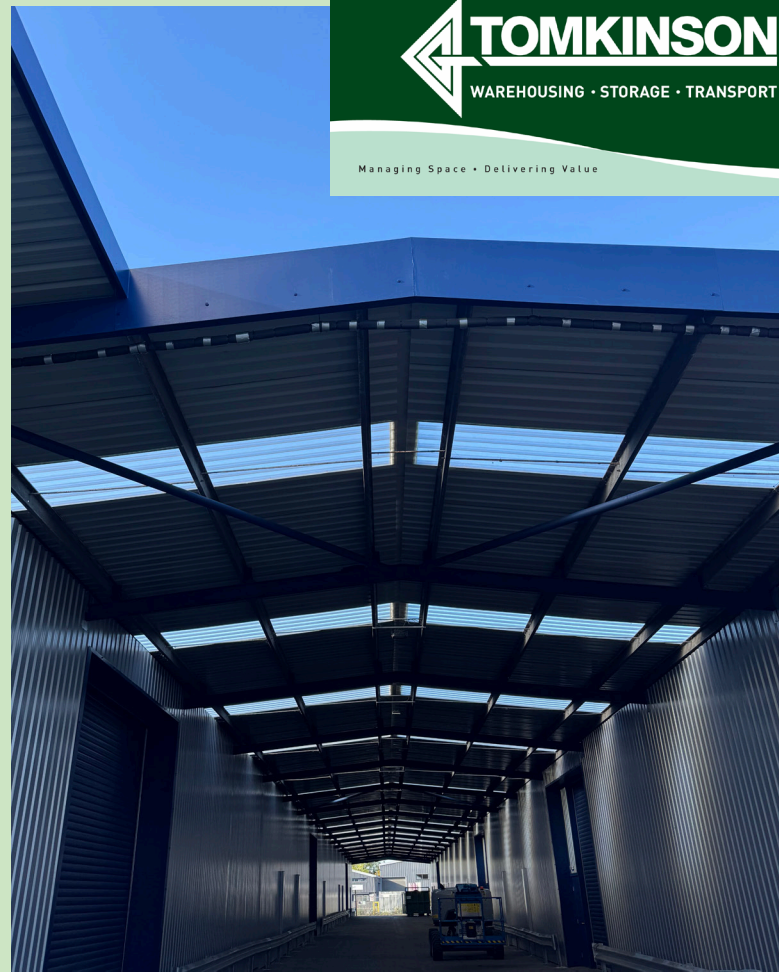


# Looking for warehousing or commercial space?



Managing Space • Delivering Value



+44 (0)1622 831455 | [sales@ggtomkinson.com](mailto:sales@ggtomkinson.com) | [tomkinsons.co.uk](http://tomkinsons.co.uk)



#### UNIT DIMENSIONS:

- Unit 1 - 1,683m<sup>2</sup> (18,115.7sq ft) - Occupied
- Unit 2 - 959.3m<sup>2</sup> (10,325.8sq ft) - Available
- Unit 3 - 711.2m<sup>2</sup> (7,655.3sq ft) - Occupied
- Unit 4 - 1,700.3m<sup>2</sup> (18,301.9sq ft) - Occupied

#### ADDRESS:

The Fruit Show Business Park,  
Pattenden Lane, Marden,  
Tonbridge, Kent, TN12 9GZ

# Discover the Fruit Show Business Park

The Fruit Show Business Park is a large, modern and versatile space that is ideal for warehousing, storage, logistics and commercial businesses.

Based in Marden, Kent, The Fruit Show Business Park benefits from quick access to London, the South East and other nearby transport links.

We can even provide support with transport and logistics services too.

**To find out more, get in touch today**

